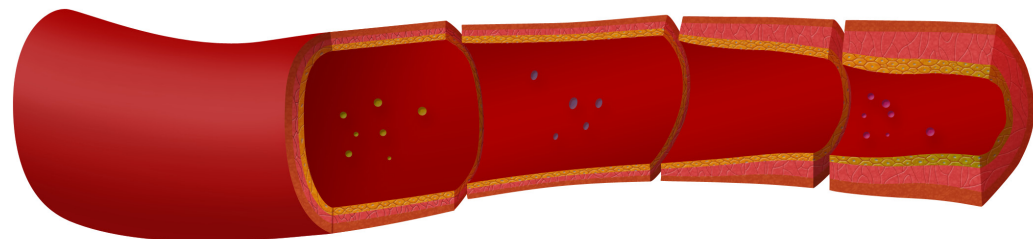


# PORTFÓLIO DE ILUSTRAÇÕES

© Guaraná Digital

[www.guaranadigital.com](http://www.guaranadigital.com)



Infográfico que indica os graus de estreitamento de artéria.  
Pesquisa Médica

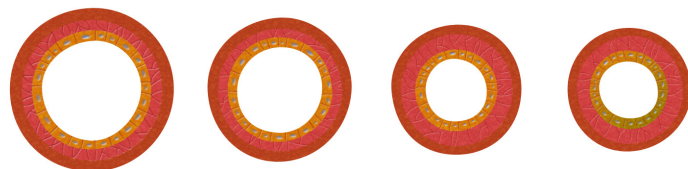
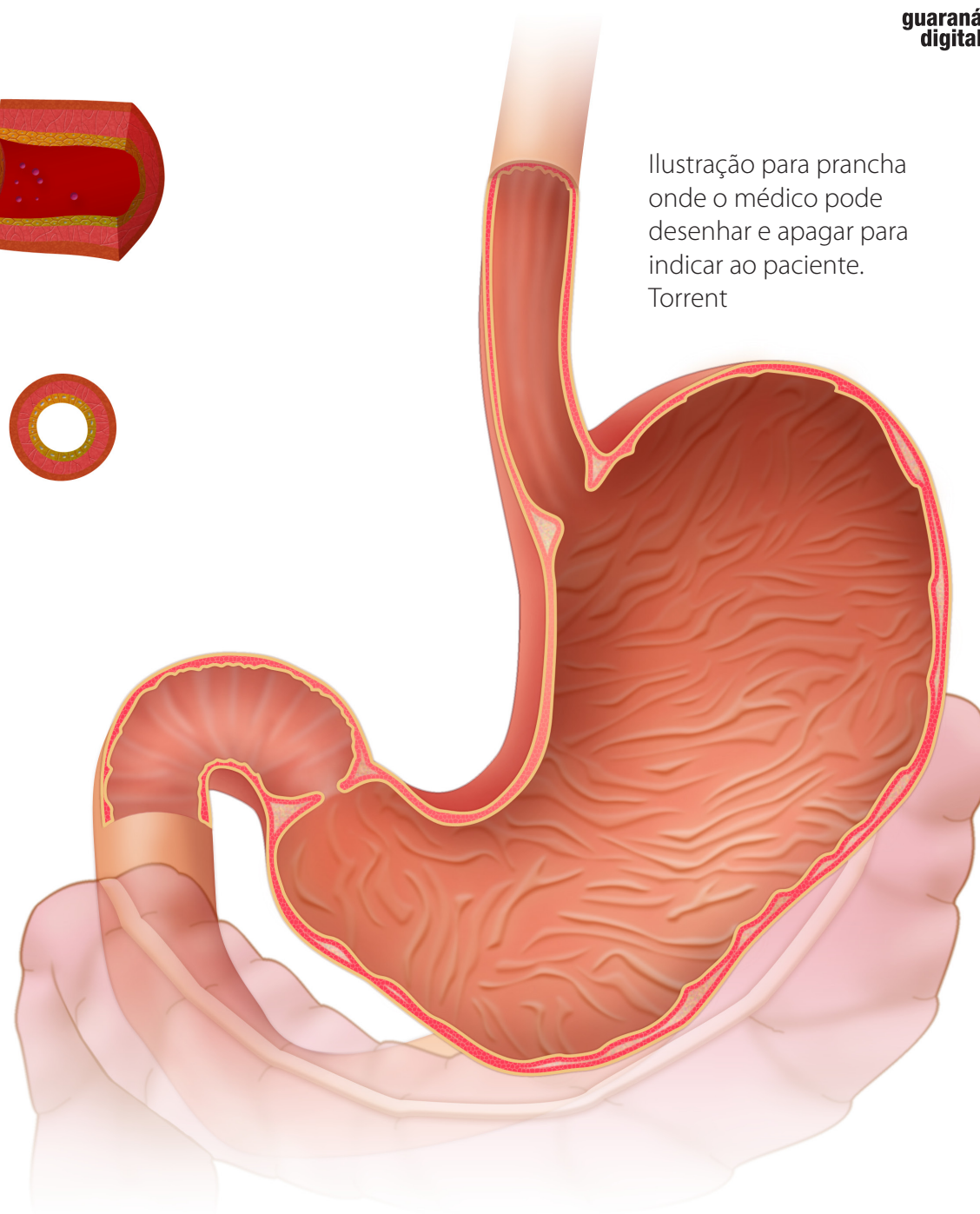
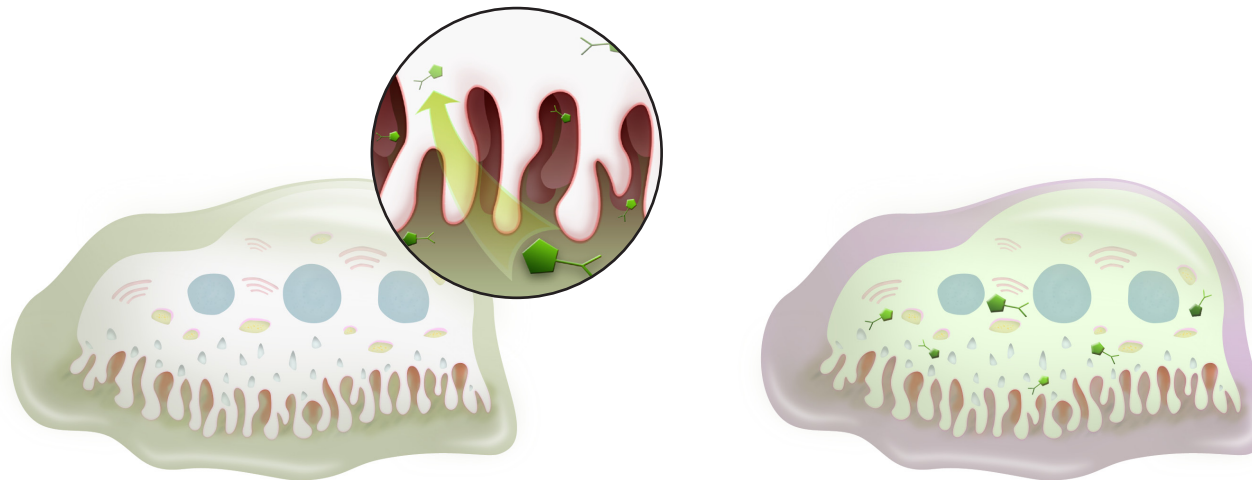
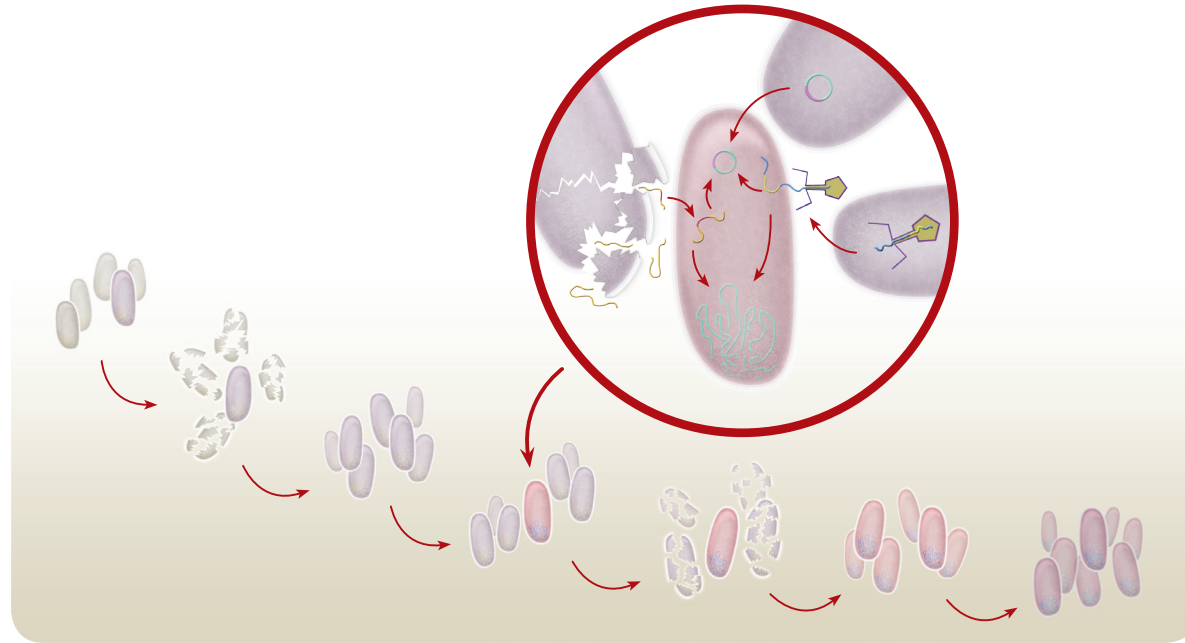
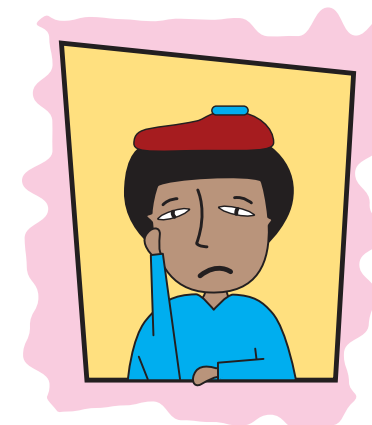
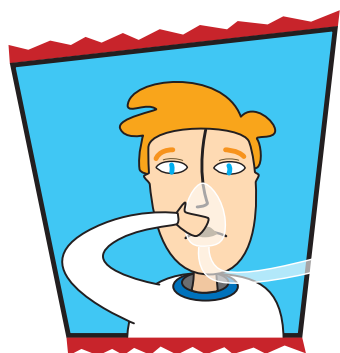


Ilustração para prancha onde o médico pode desenhar e apagar para indicar ao paciente.  
Torrent

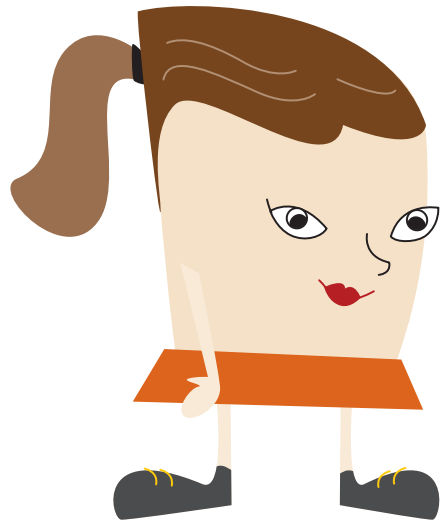


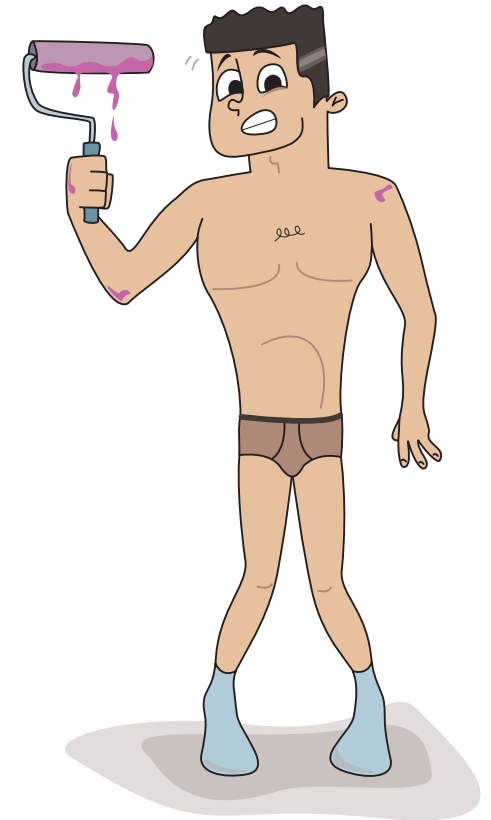


Infográfico sobre a ação de medicamento.  
Bayer







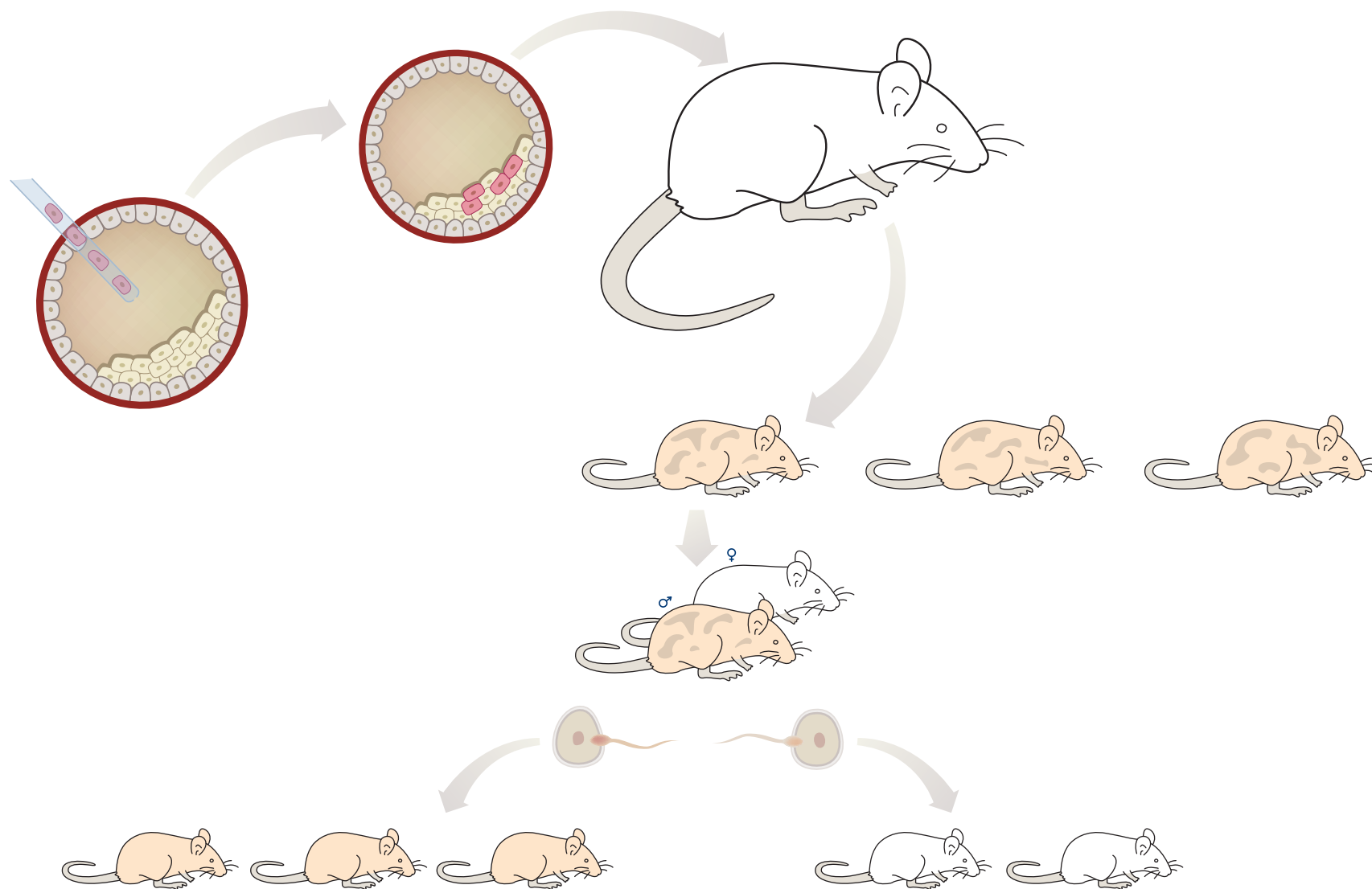


Infográfico sobre a ação de alérgenos em pessoa com rinite.  
Alvesco

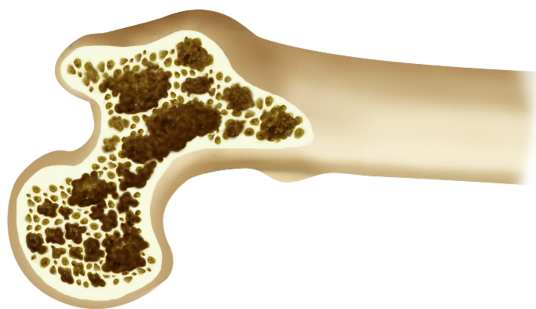




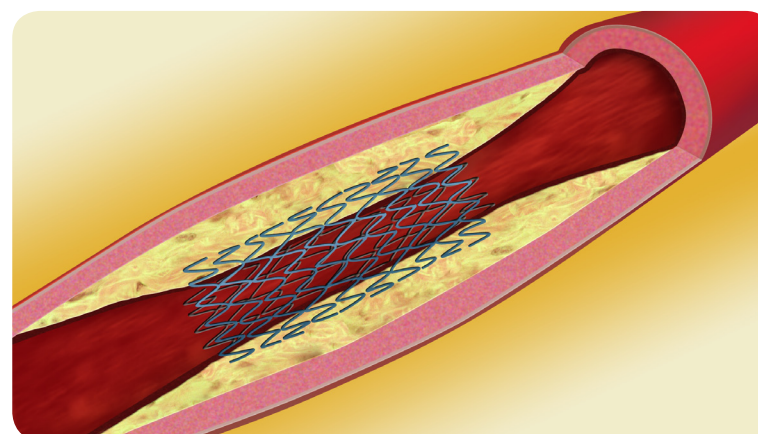
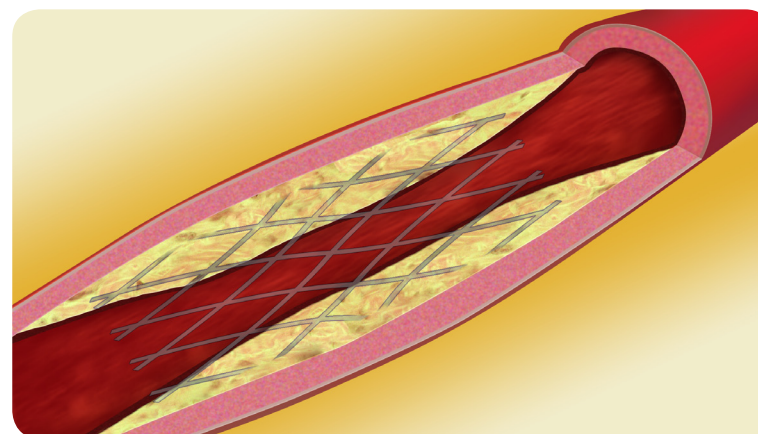
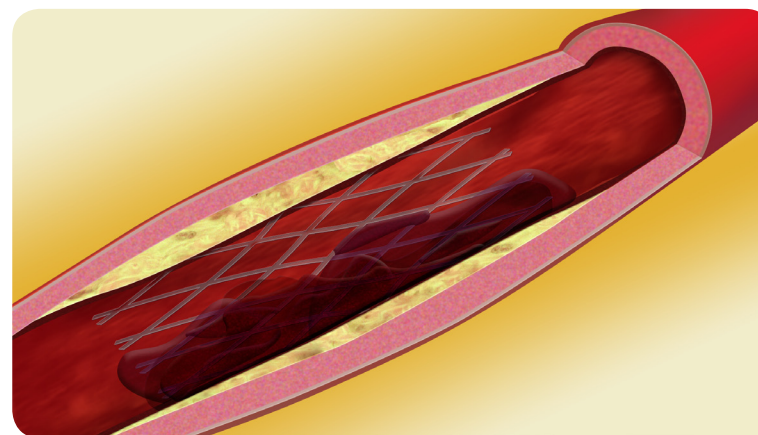
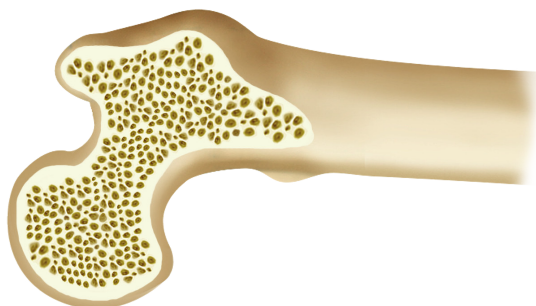
Infográfico sobre a técnica premiada com o Nobel de Medicina 2007 sobre genômica.  
Estudos de Martin J. Evans, Mario Capecchi e Oliver Smithies. Pesquisa Médica.



Infográfico sobre a atuação  
de stent fármaco.  
Pesquisa Médica

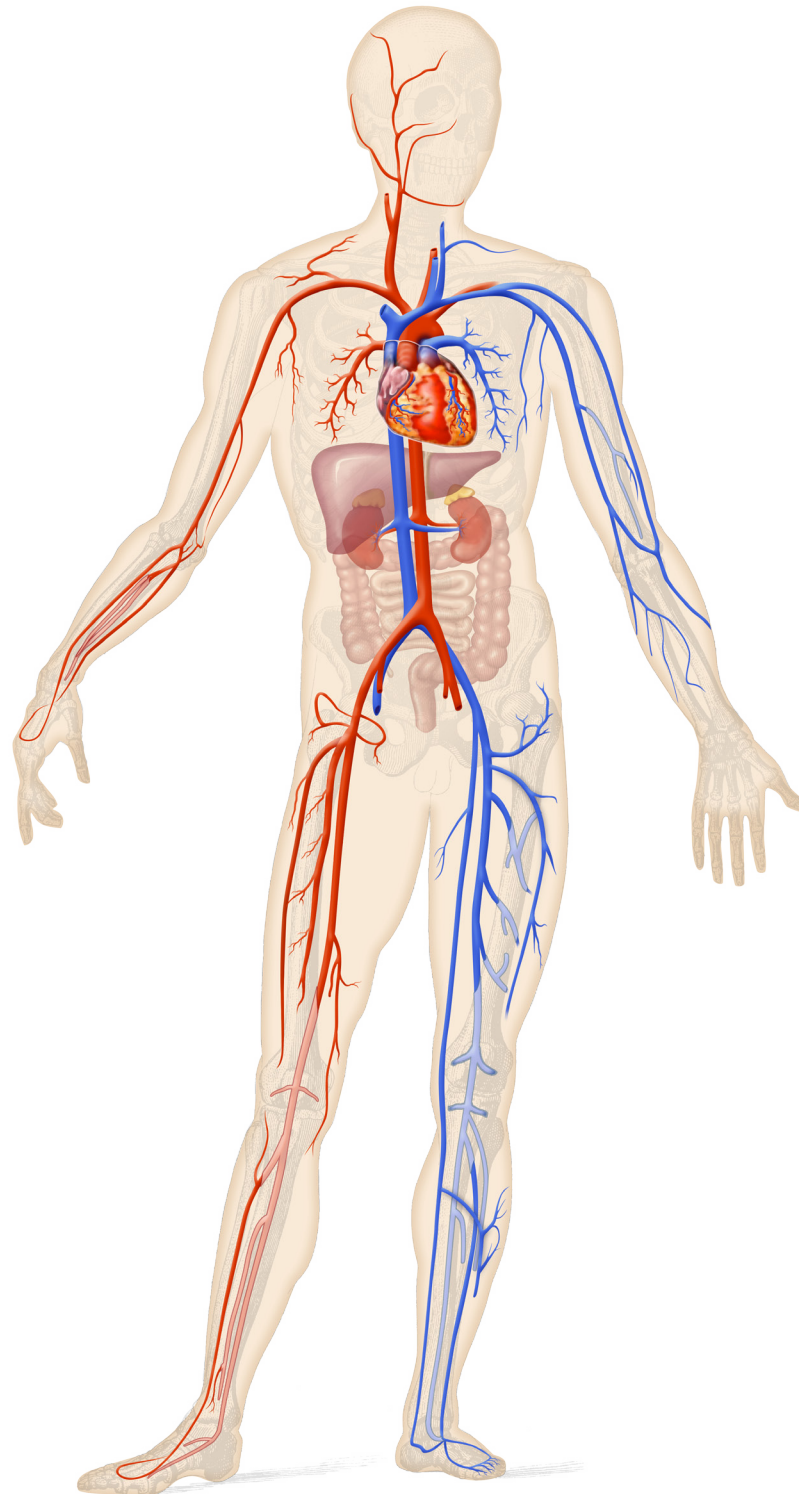
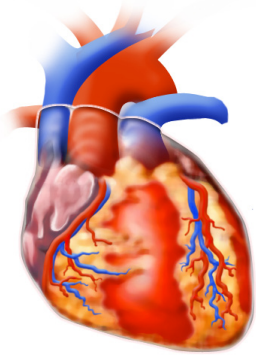


Osso com e sem  
osteoporose.  
Bayer

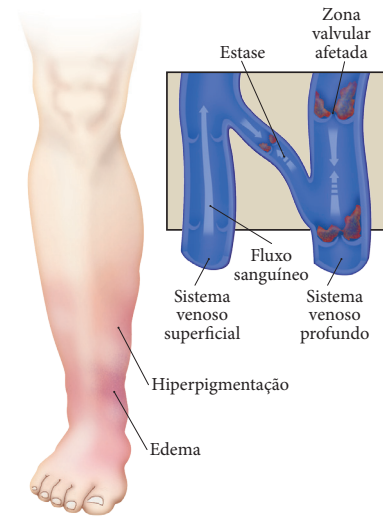




Releitura da obra  
Abaporu de  
Tarsila do Amaral



**TROMBOSE VENOSA PROFUNDA**  
(sinais da fase leve)



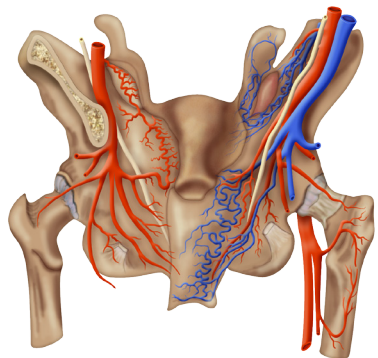
**O SISTEMA VASCULAR**

PRINCIPAIS DOENÇAS ASSOCIADAS:  
 - Aterosclerose  
 - Hipertensão arterial sistólica  
 - Infarto do miocárdio  
 - AVC (Acidente Vascular Cerebral)  
 - Trombose venosa profunda  
 - Embolia pulmonar

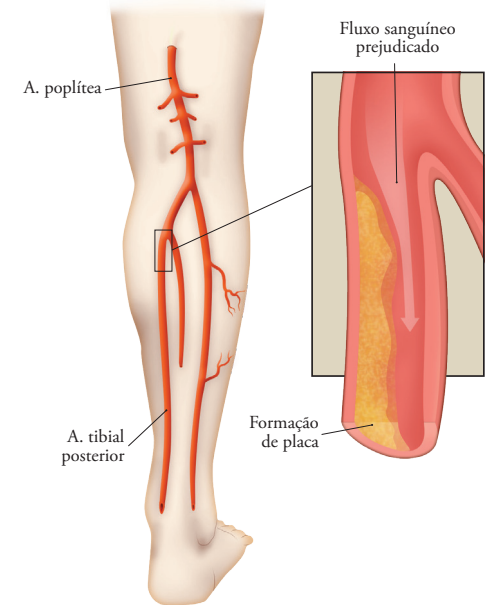
Para mais informações, consulte o site: [www.guaranadigital.com.br](http://www.guaranadigital.com.br)

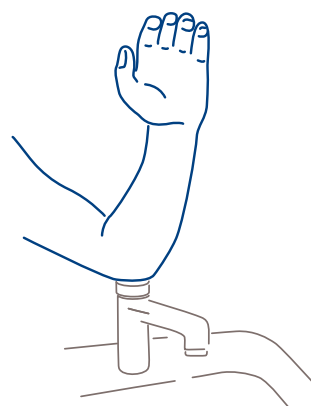
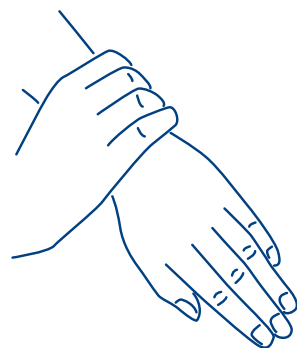
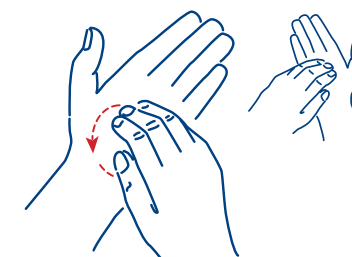
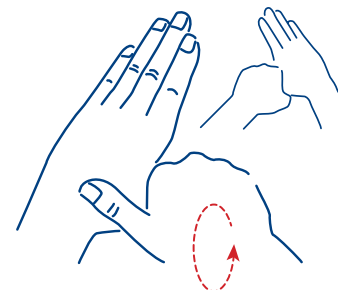
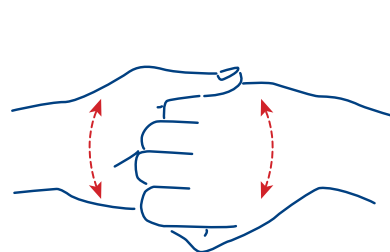
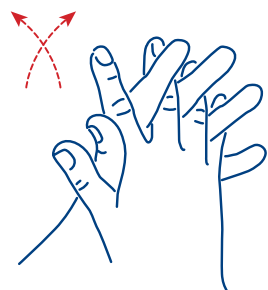
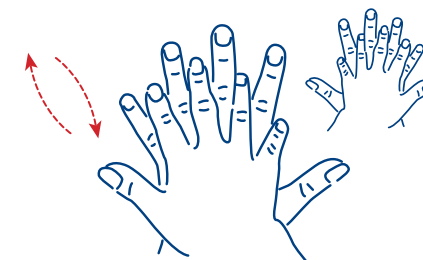
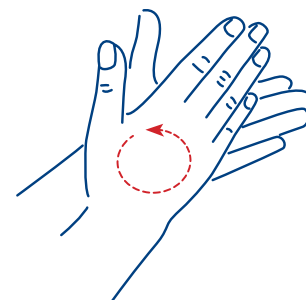
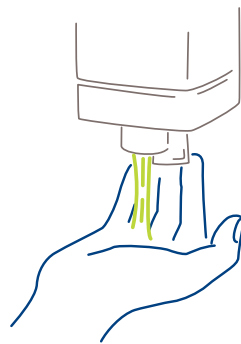
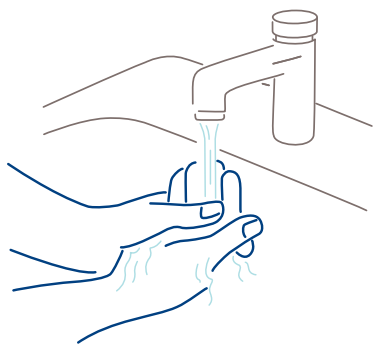
SCIO

Ilustrações do sistema vascular para poster. Takeda Nycomed



**ARTEROSCLEROSE**





Personagens  
para objetos  
educacionais  
digitais





Ilustração  
para objetos  
educacionais  
digitais

